



Total Solution Provider in Saw Device

SA09329AD1

93.75MHz IF SAW Filter
29.65MHz Bandwidth
Revision 0: 19. August. 2010



- Electrical Characteristics
 - Package Dimensions
 - Testing Environment
 - Frequency Characteristics
-

SAWNICS Inc.

460 Cheonheung-ri, Seonggeo-eup, Cheonan-si, Chungcheongnam-do, 330-836 / Korea.
Tel: +82 41 550 9372 / Fax: +82 41 550 9399 / www.sawnics.com

□ Electrical Characteristics

Maximum Ratings

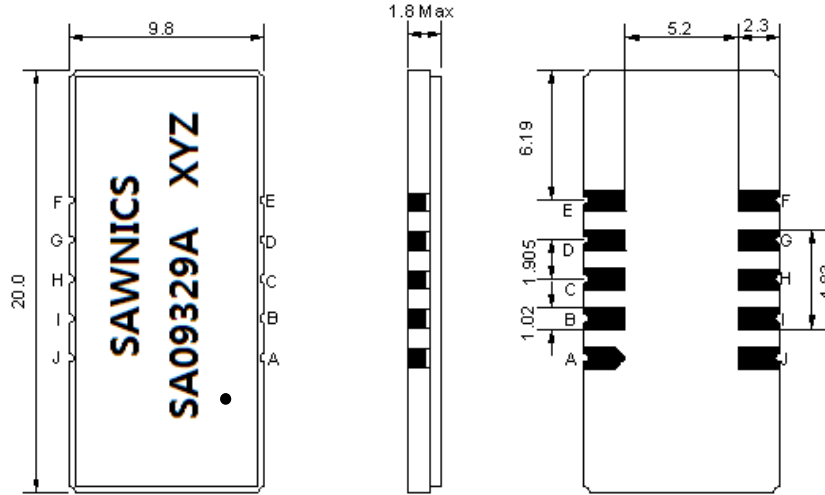
Parameters Description	Unit	Minimum	Typical	Maximum
Operation Temperature Range	°C	-30	-	+70
Storage Temperature Range	°C	-40	-	+85
Maximum DC Voltage	V	-	-	10
Maximum Input Power	dBm	-	-	10
Source Impedance (single ended) ⁽¹⁾	Ω	-	50	-
Load Impedance (single ended) ⁽¹⁾	Ω	-	50	-
Package type & size	D1			
Length x Width	mm ²	-	20.0 x 9.8	-
Height	mm	-	-	1.8

Electrical Specification

Parameters Description	Unit	Minimum	Typical	Maximum
Center Frequency (Fo)	MHz	-	93.75	-
Insertion Loss at Fo	dB	-	24.20	27.00
Group Delay Variation at Fo ± 14.22 MHz	nsec	-	25	70
Absolute Delay at Fo	usec	-	1.98	2.10
Passband Ripple Variation at Fo ± 14.22 MHz	dB	-	0.55	1.00
Bandwidth at -1dB	MHz	-	29.65	-
Bandwidth at -3dB	MHz	-	30.00	-
Bandwidth at -40dB	MHz	-	31.48	-
Ultimate Rejection	dB	50	54	-
Temperature Coefficient	ppm/°C	-	-72	-

Notes : (1) With Matching Network (Ref. Testing Environment Circuit as shown below).
Those impedances could be modified with different impedance values and/or structures, if necessary.

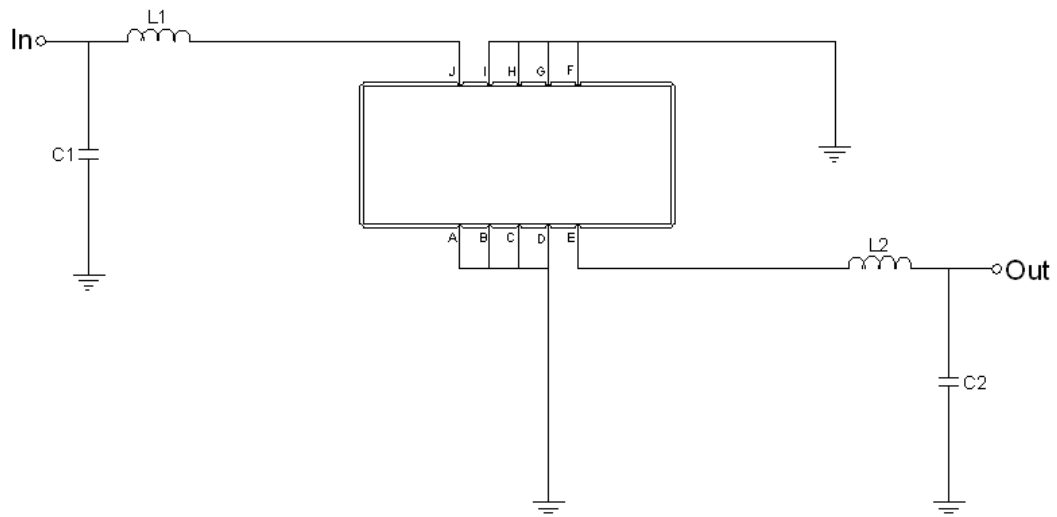
Package Dimensions



- ① SAWNICS: Brand
- ② SA09329A: Model Name
- ③ X : Date Code (Year)
- ④ Y : Date Code (Month)
- ⑤ Z : Date Code (Date)
- : Index Dot

Pin Description	
A, B, C, D, F, G, H, I	Ground
J	Input
E	Output

Testing Environment



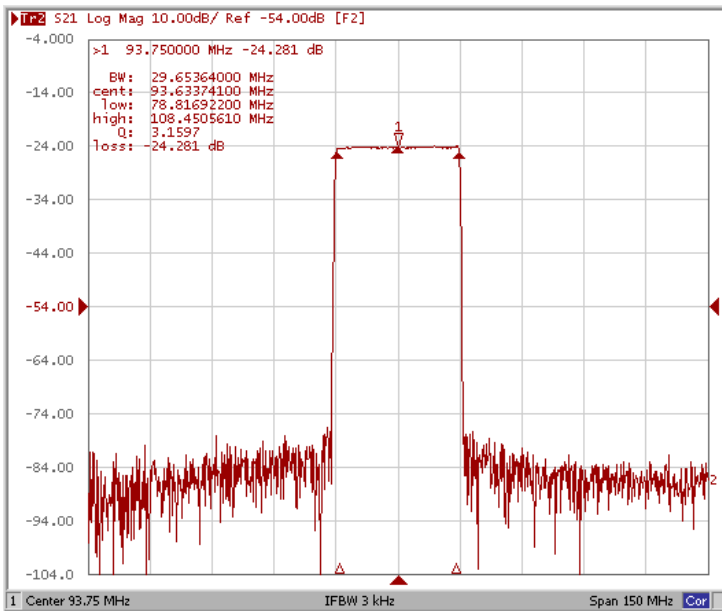
Test Fixture & Values	
Input	L1 = 120 nH, C1=18 pF
Output	L2 = 120 nH, C1=18 pF
Source/Load Impedance	50 Ω



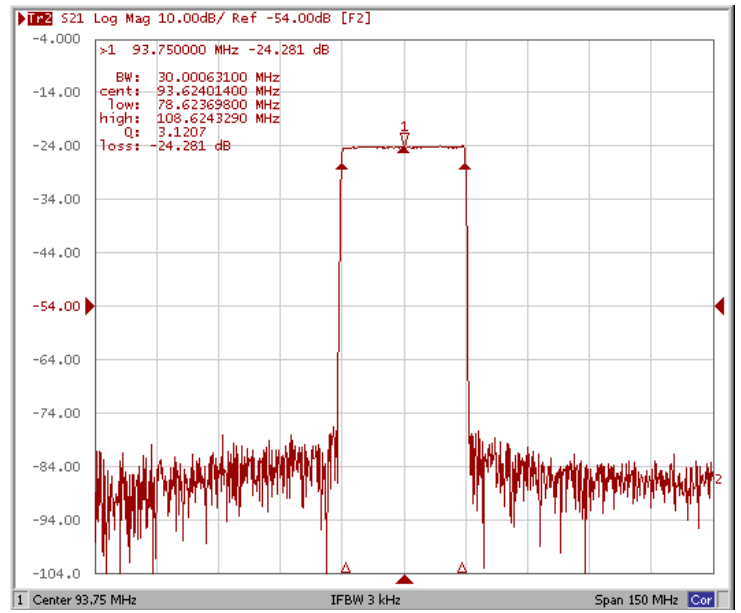
Frequency Characteristics

Frequency Response

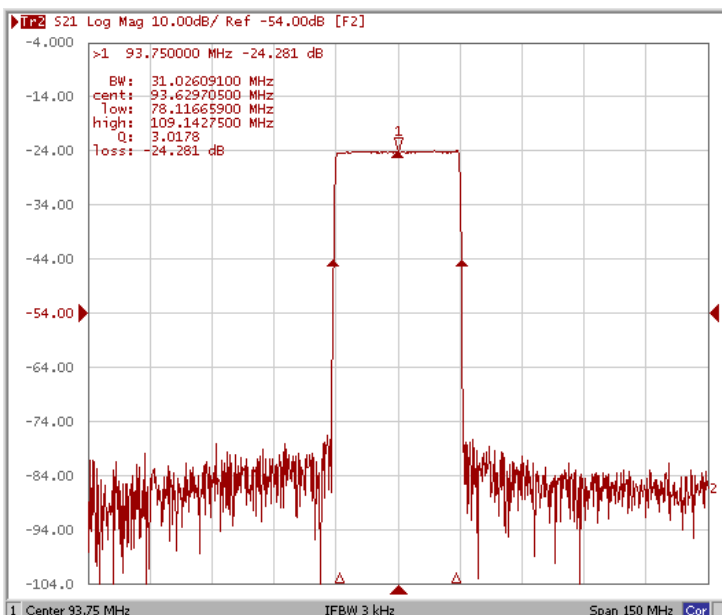
Bandwidth at -1.0 dB



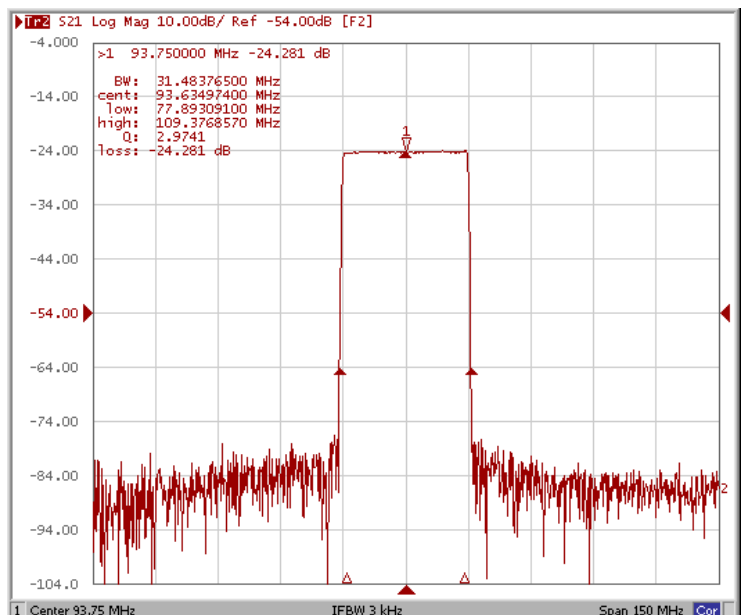
Bandwidth at -3.0 dB



Bandwidth at -20.0 dB



Bandwidth at -40.0 dB

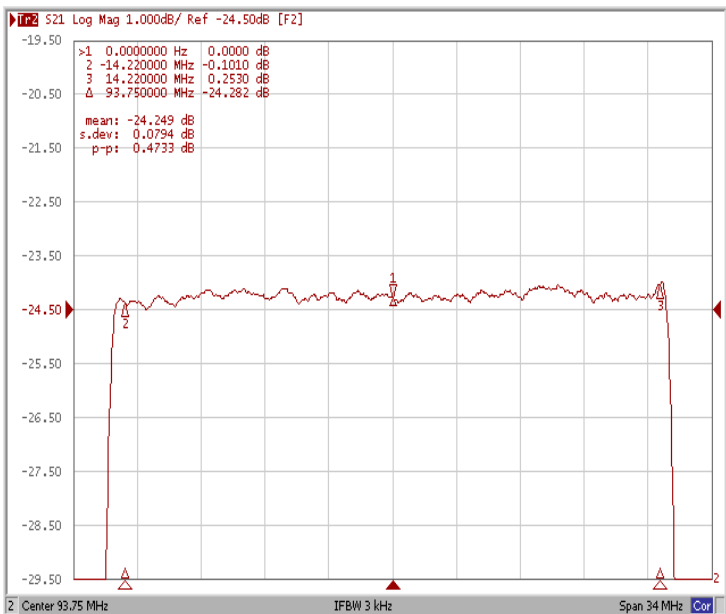




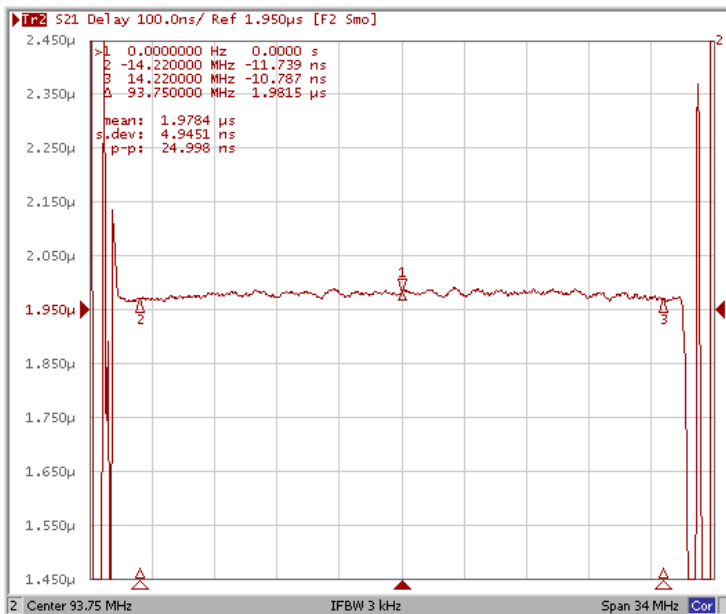
Frequency Characteristics

Frequency Response

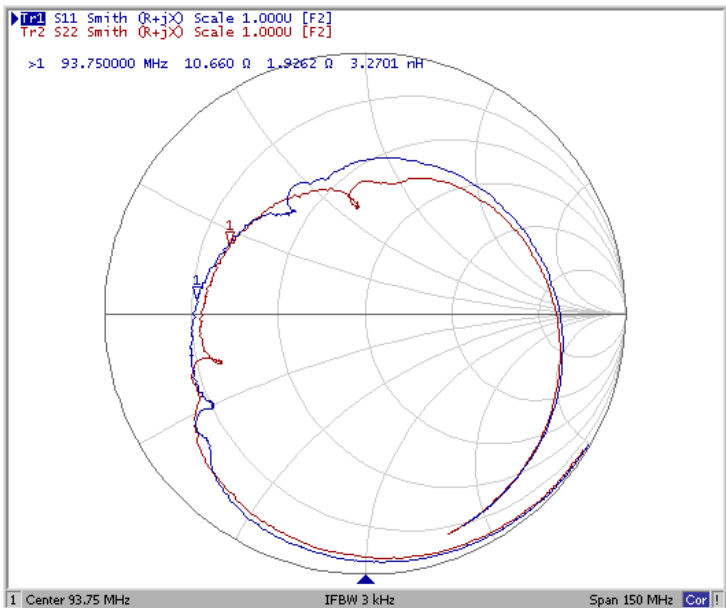
Ripple Variation Fo±14.22MHz



Group Delay Variation Fo±14.22MHz



Smith Chart



VSWR

